

VM SERIES

SINGLE PHASE

VM-2K-S | VM-2.5K-S | VM-3K-S | VM-3.3K-S
 VM-4.6K-S | VM-5K-S | VM-5.3K-F | VM-6K-S

Harness the power of the sun with precision and efficiency. Our cutting-edge technology maximizes energy capture from your solar panels, ensuring optimal performance. Experience seamless integration and reliable energy conversion with our Single Phase MPPT Solar Inverter.



SINGLE MPPT

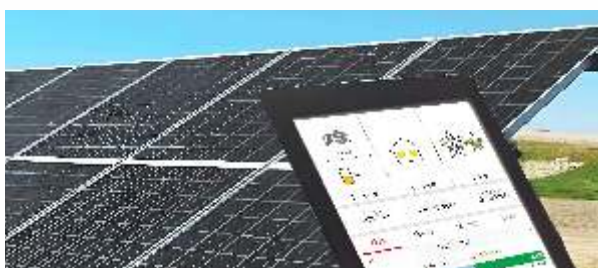


DUAL MPPT

<p>Higher MPPT Current 14 Amps</p>	<p>Maximum Efficiency Upto 97.40%</p>	<p>Low Start-up Voltage</p>	<p>Overloading Upto 1.4 Times Depending on Rating</p>	<p>AC & DC Surge Protection</p>
<p>LCD Display for Monitoring</p>	<p>Smart Online Monitoring with WiFi/GPRS</p>	<p>Transformer-less Design For Safety & Reliability</p>	<p>IP65 Protection Level</p>	<p>Compact Design & Light Weight</p>

Anytime, Anywhere Remote Monitoring Platform

Monitor system performance in real-time via smartphone app or web portal using our advanced monitoring platform



For more about the Inverters range
Visit: goldisolar.com/vama
Toll Free Number: 1800 833 5511



TECHNICAL SPECIFICATIONS

MODEL	VM-2K-S	VM-2.5K-S	VM-3K-S	VM-3.3K-S	VM-4.6K-S	VM-5K-S	VM-5.3K-S	VM-6K-S
RATINGS	2KW	2.5KW	3KW	3.3KW	4.6KW	5KW	5.3KW	6KW
INPUT	SINGLE MPPT				DUAL MPPT			
PV/DC Parameters								
Max. Recommended DC Power [W]	3000	3750	4500	4950	6900	7500	7950	9000
Max.DC Voltage [V]	500	500	500	500	600	600	600	600
Nominal DC Operating Voltage [V]	360	360	360	360	360	360	360	360
MPPT Voltage Range [Vdc]	50-480	50-480	50-480	50-480	80-550	80-550	80-550	80-550
Start-up Voltage [V]	60	60	60	60	120	120	120	120
Max. Input Current [A]	14	14	14	14	14/14			
Max. Short Circuit Current [A]	18	18	18	18	18/18			
No. of MPP Trackers	1	1	1	1	2	2	2	2
Strings Per MPP Tracker	1	1	1	1	1+1	1+1	1+1	1+1
OUTPUT								
AC								
Nominal AC Power [W]	2000	2500	3000	3300	4600	5000	5300	6000
Rated Grid Voltage [Vac]	220/230/240							
Max. Apparent AC Power [VA]	2200	2750	3300	3300	5060*1	5500*2	5830	6000
Rated Grid Frequency [Hz]	50/60							
Max. AC Current [A]	9.6	12.0	14.3	14.3	22.0	23.9	25.3	26.1
Nominal AC Current [A]	8.7	10.9	13	14.3	20	21.7	23	26.1
Displacement Power Factor	1 (Adjustable from 0.8 leading to 0.8 lagging)							
Total Harmonic Distortion (THDi, Nominal Output)	<3%	<3%	<3%	<3%	<3%	<3%	<3%	<3%
EFFICIENCY								
MPPT Efficiency	99.00%	99.00%	99.00%	99.00%	99.00%	99.00%	99.00%	99.00%
Euro-efficiency	96.80%	96.80%	96.80%	96.80%	96.80%	96.80%	96.80%	96.80%
Max. Efficiency	97.40%	97.40%	97.40%	97.40%	97.40%	97.40%	97.40%	97.40%
PROTECTION								
DC Reverse Polarity Protection	YES				YES			
Anti-Islanding Protection	YES				YES			
Insulation Monitoring	YES				YES			
Residual Current Monitoring	YES				YES			
AC Short Circuit Protection	YES				YES			
AC Output Over Voltage Protection	YES				YES			
AC Output Over Current Protection	YES				YES			
Surge Protection	Optional Type II(DC) / Type II(AC)				Optional Type II(DC) / Type II(AC)			
Temperature Protection	YES				YES			
AFCI Protection	Optional				Optional			
Integrated DC Switch	Optional				Optional			
STANDARD								
Safety	IEC 62109-1/2				IEC 62109-1/2			
EMC	IEC 61000-6-1/IEC 61000-6-2/IEC 61000-6-3				IEC 61000-6-1/IEC 61000-6-2/IEC 61000-6-3			
Certification	IEC 61683/IEC 61727/IEC 62116/IEC 60068-2-1 /IEC 60068-2-2/ IEC 60068-2-14 /IEC 60068-2-30/IEC 60068-2-64				IEC 61683/IEC 61727/IEC 62116/IEC 60068-2-1 / IEC 60068-2-2/IEC 60068-2-14 /IEC 60068-2-30/ IEC 60068-2-64			
GENERAL DATA								
Dimensions (WxHxD) [mm]	290*220*116				402*453.5*148			
Weight [kg]	5.4				15.5			
Cooling Concept	Natural				Natural			
Topology	Non- Isolated				Transformerless			
Ingress Protection (according to IEC60529)	IP65				IP65			
Noise Emission (typical) [dB]	<30				<30			
Max. Operating Altitude [m]	3000				3000			
Operating Temperature Range	-25..... +60°C				-25..... +60°C			
Humidity	0-100% (No condensation)				0-100% (No condensation)			
Monitoring Module (optional)	External WIFI/GPRS(optional)				External WIFI/Lan/GPRS (optional)			
Self Consumption (night) [W]	<1				<1			
Communication	RS485,Meter,CT, ISO alarm				Meter, CT, DRM, RS485			
Display	LCD screen, Touch Key, App, Website				LCD screen, Touch Key, App,Website			
Warranty	Standard warranty 7 years against any manufacturing defects (pls refer warranty policy for details)							

*Specifications are e subjected to change without prior notice

*Check availability of GSM or wifi dongle before ordering

*Standard warranty 7 years + 3 years extended repair warranty and 1 year on accessories against any manufacturing defects.

VERSION: VM 2023/3.2

